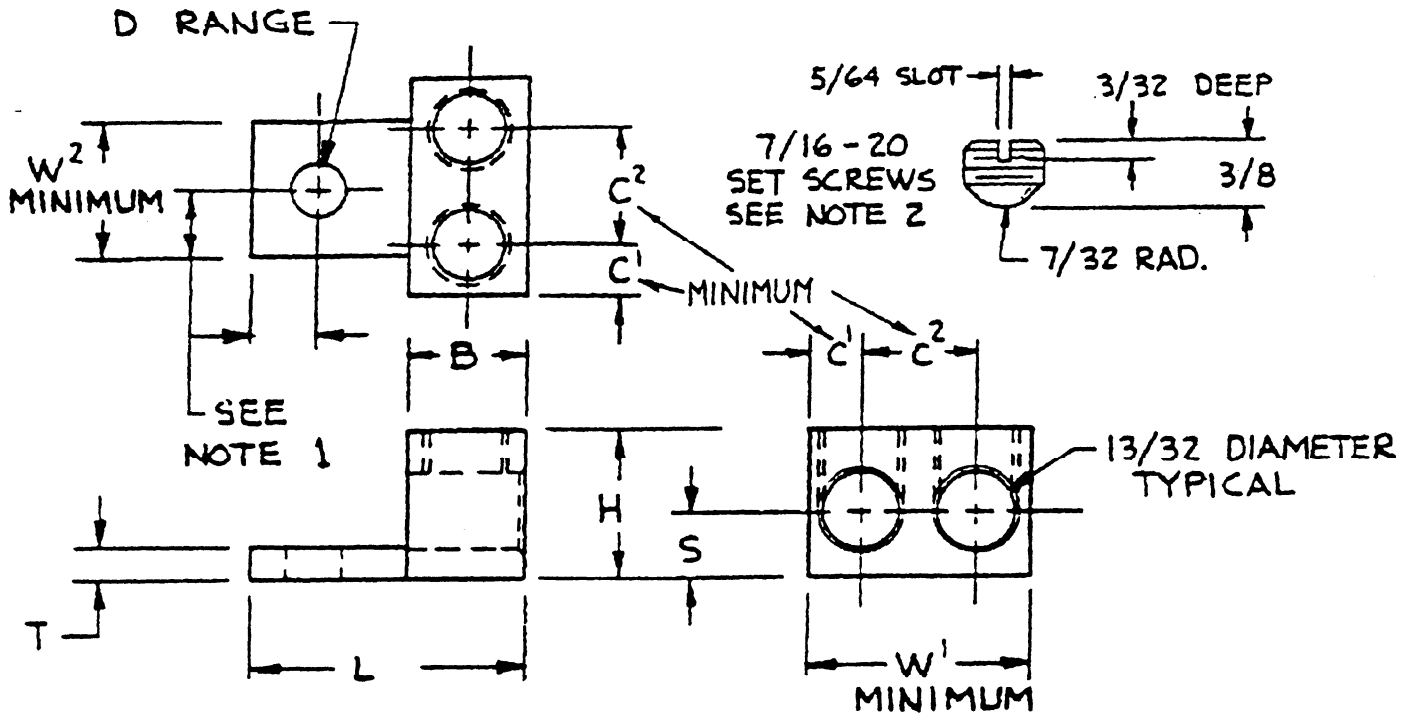


UL LISTED



STYLE	L	H	W ¹	W ²	T	B	S	C ¹	C ²	D RANGE
1.	1 ¹⁵ / ₃₂	13/16	1 ³ / ₁₆	47/64	3/16	5/8	3/8	9/32	4 ¹ / ₆₄	1/4 - 7/16
2.	1 ⁴⁹ / ₆₄	"	"	"	13/64	4 ¹ / ₆₄	"	"	"	" "
3.	1 ¹⁵ / ₃₂	"	17/64	1 ⁷ / ₆₄	3/16	5/8	3/8	17/64	19/32	" "

PARTS ARE :

1. MARKED - IH LOGO* 2S1/0 1/0 - 14 CU 9AL (U)
2. ALUMINUM 6061-T6
3. TIN - PLATED

NOTES :

1. MOUNTING HOLE LOCATION AND SHAPE MAY VARY; AND MAY BE THREADED.
2. SCREWS ARE TIN-PLATED AND WAX DIPPED ALUMINUM 2011-T3

*PER DRAWING 12380

INTERNATIONAL HYDRAULICS
INCORPORATED

TITLE

2S1/0

THIS DRAWING AND DESIGN ARE THE PROPERTY OF INTERNATIONAL HYDRAULICS INC., CLEVELAND, OHIO, AND MAY NOT BE DUPLICATED, USED FOR BASIS OF DESIGN OR MANUFACTURE WITHOUT THE WRITTEN PERMISSION OF INTERNATIONAL HYDRAULICS INC., CLEVELAND, OHIO.

DWG. BY JDB	DATE 7-13-99	DRAWING NO. 14133	REV.
CHK. BY NHS	SCALE		