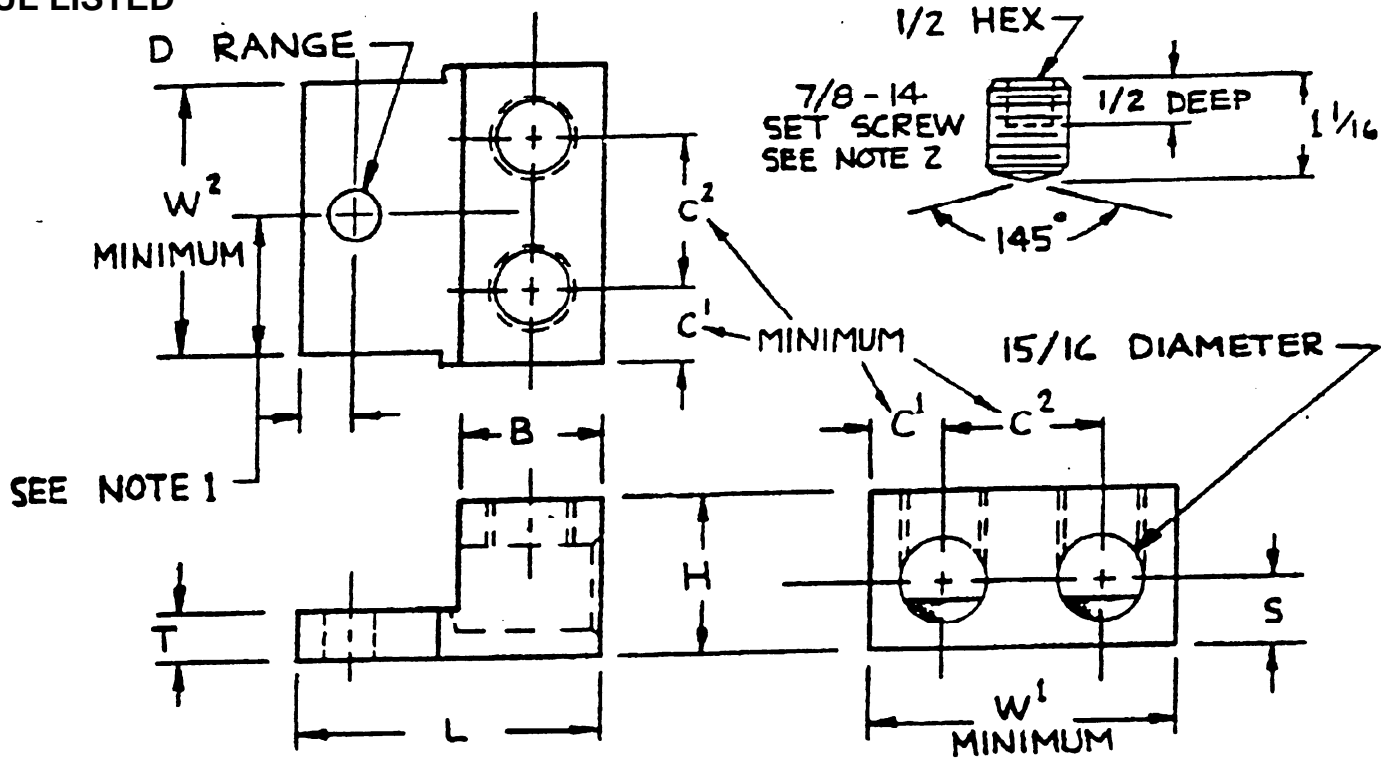


UL LISTED



STYLE	L	H	W ¹	W ²	T	B	S	C ¹	C ²	D RANGE
1.	3 1/8	1 9/16	2 23/64	1 23/64	7/16	1 3/8	43/64	37/64	1 7/32	3/8 - 5/8
2.	3 3/16	"	"	"	"	"	"	"	"	" - "
3.	4 11/16	"	"	"	"	"	"	"	"	" - "

PARTS ARE :
 1. MARKED - IHI LOGO* 2S600 600 MCM - 4 CU9AL (UL)
 2. TIN - PLATED ALUMINUM 6061-T6

File E129884

NOTES :
 1. MOUNTING HOLE LOCATION AND SHAPE MAY VARY, AND MAY BE THREADED.
 2. SCREWS ARE TIN-PLATED ALUMINUM 2011-T3.

*PER DRAWING 12380

INTERNATIONAL HYDRAULICS
 INCORPORATED

TITLE
2S600

DWG. BY JDB	DATE 7-13-99	DRAWING NO. 14137	REV.
CHK BY NHS	SCALE		

THIS DRAWING AND DESIGN ARE THE PROPERTY OF INTERNATIONAL HYDRAULICS INC., CLEVELAND, OHIO, AND MAY NOT BE DUPLICATED, USED FOR BASIS OF DESIGN OR MANUFACTURE WITHOUT THE WRITTEN PERMISSION OF INTERNATIONAL HYDRAULICS INC., CLEVELAND, OHIO.