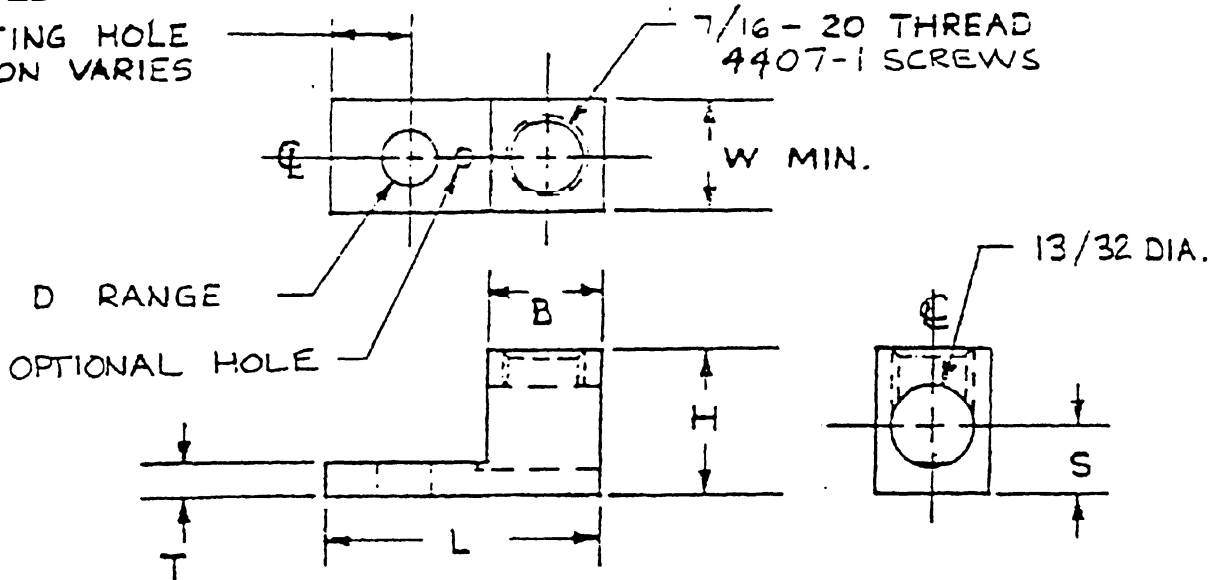


**UL LISTED**

MOUNTING HOLE LOCATION VARIES



STYLE	L	H	W	T	B	S	D RANGE
1.	1 15/32	13/16	39/64	3/16	5/8	3/8	1/4 - 13/32
2.	1 1/2	3/4	"	1/8	"	11/32	" "
3.	1 9/16	47/64	"	"	"	"	" "
4.	1 3/16	13/16	"	3/16	"	3/8	13/64 - 13/32

E129884

**PARTS ARE :**

1. MARKED - IHI LOGO\* S1/0 1/0 - 14 CU9AL (U) (EA)
2. TIN - PLATED
3. ALUMINUM 6061-T6

NOTE:

1. SCREW IS WAX DIPPED.

\*PER DRAWING 12380

**INTERNATIONAL HYDRAULICS  
INCORPORATED**

TITLE

**S1/0**

OWG. BY	JDB	DATE	7-13-99	DRAWING NO.	14125	REV.	
CHK. BY	NHS	SCALE					

THIS DRAWING AND DESIGN ARE THE PROPERTY OF INTERNATIONAL HYDRAULICS INC., CLEVELAND, OHIO, AND MAY NOT BE DUPLICATED, USED FOR BASIS OF DESIGN OR MANUFACTURE WITHOUT THE WRITTEN PERMISSION OF INTERNATIONAL HYDRAULICS INC., CLEVELAND, OHIO.