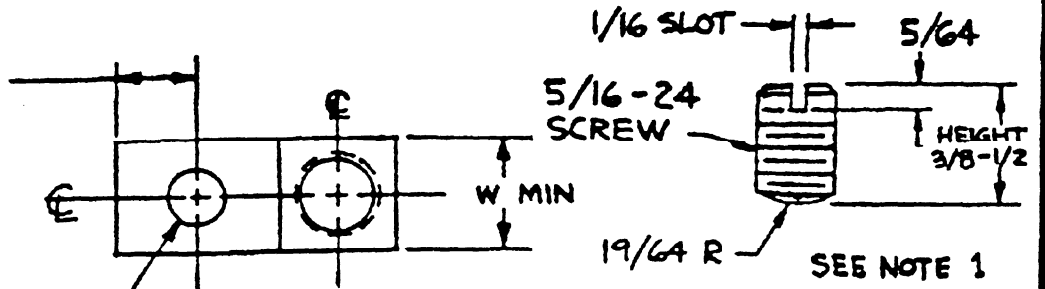
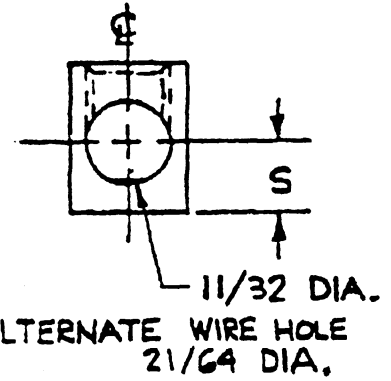
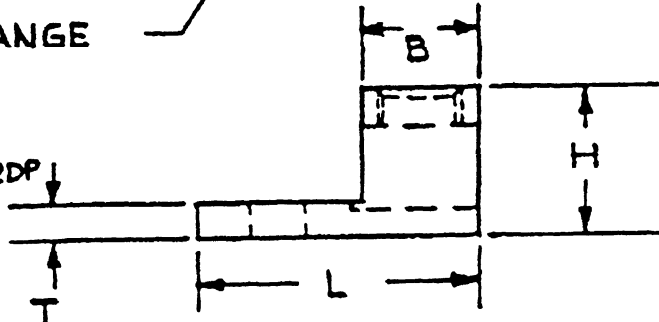
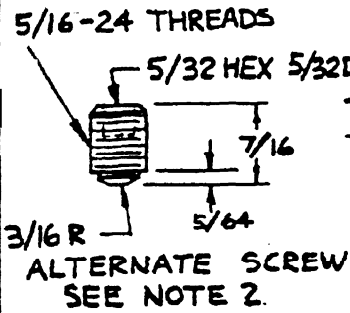


UL LISTED

MOUNTING HOLE LOCATION VARIES



D RANGE



STYLE	L	H	W	T	B	S	D RANGE
1.	1 5/32	9/16	3 1/64	3/32	15/32	1/4	13/64 - 5/16

E129884

PARTS ARE :

1. MARKED - IHI LOGO* S2 2 - 14 CU9AL (4) (5)
2. TIN - PLATED
3. ALUMINUM 6061-T6

NOTES :

1. SCREW IS ZINC PLATED STEEL OR TIN-PLATED 2011-T3 ALUMINUM
2. ALTERNATE SCREW IS TIN-PLATED BRASS.
3. SCREW IS IVAX DIPPED.

*PER DRAWING 12380

INTERNATIONAL HYDRAULICS
INCORPORATED

TITLE

S2

DWG BY JDB	DATE 7-13-99	DRAWING NO. 14124	REV.
CHK BY NHS	SCALE		

THIS DRAWING AND DESIGN ARE THE PROPERTY OF INTERNATIONAL HYDRAULICS INC., CLEVELAND, OHIO, AND MAY NOT BE DUPLICATED, USED FOR BASIS OF DESIGN OR MANUFACTURE WITHOUT THE WRITTEN PERMISSION OF INTERNATIONAL HYDRAULICS INC., CLEVELAND, OHIO.