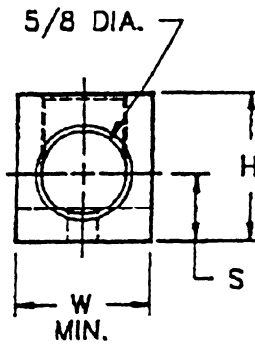
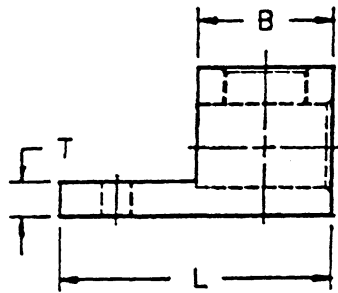
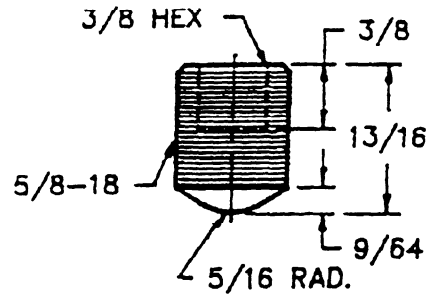
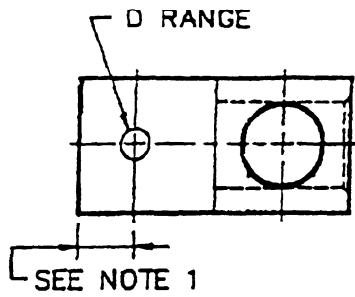


UL LISTED



STYLE	L	H	W	T	B	S	D RANGE
1.	1-29/32	1-1/8	53/64	1/4	1	33/64	13/64-17/32
2.	2	1-1/16	57/64	7/32	1	33/64	13/64-17/32

File E129884

PARTS ARE:

1. MARKED: IHI LOGO* S250 250MCM-6 CU9AL (UL) (SA)
2. ALUMINUM 6061-T6
3. TIN PLATED

NOTES:

1. MOUNTING HOLE LOCATION & SHAPE MAY VARY
2. SCREW IS ALUMINUM(2011-T3) TIN PLATED & WAX DIPPED

*PER DRAWING 12380

INTERNATIONAL HYDRAULICS
INCORPORATED

TITLE

S250

THIS DRAWING AND DESIGN ARE THE PROPERTY OF INTERNATIONAL HYDRAULICS INC., CLEVELAND, OHIO, AND MAY NOT BE DUPLICATED, USED FOR BASIS OF DESIGN OR MANUFACTURE WITHOUT THE WRITTEN PERMISSION OF INTERNATIONAL HYDRAULICS INC., CLEVELAND, OHIO.

DWG. BY	JDB	DATE	7-13-99	DRAWING NO.	14127	REV.	
CHK. BY	NHS	SCALE					