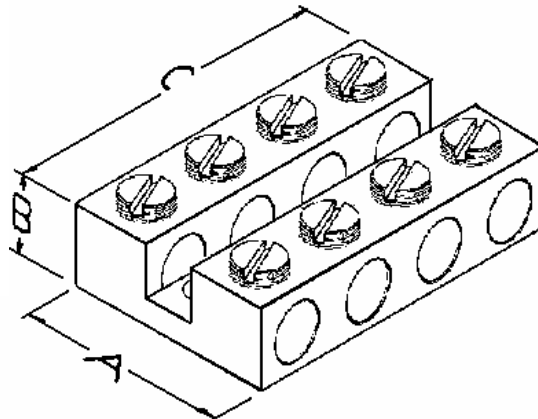


Connectors

WWW.IHICONNECTORS.COM ®

N Series Dual Neutral Bars

**Tin Plated
Aluminum
for Copper and
Aluminum
Conductors**



- Built in wire stops
- More compact than single bars
- No holes lost for mounting screws
- No additional mounting block required for dual bars

Wire Range	Catalog Number	No. of Poles	A	B	C	Mtg. Holes Diameter
AWG 4 -14	N4 – No. of Poles	1 to 20	.94	.44	(No. of Poles x .30) +.05	.21
AWG 2 -14	N2 – No. of Poles	1 to 20	1.07	.50	(No. of Poles x .36) +.07	.21

Standard and Custom Connectors

Materials: • Aluminum Alloys • Copper Alloys • Brass Alloys
Mechanical Products: • Box Connectors • Splicers • Lugs
Wire Sizes: 14 AWG to 1000 MCM

ANY QUESTIONS?

Call Charles Ridley (ext. 103)

to discuss your needs: 440-951-7186 Fax: 440-951-1071

e-mail: Charles Ridley: cRidley@ihinet.com

**IHI Connectors™, International Hydraulics Inc.
7638 St. Clair Avenue, Mentor, OH 44060-5236**