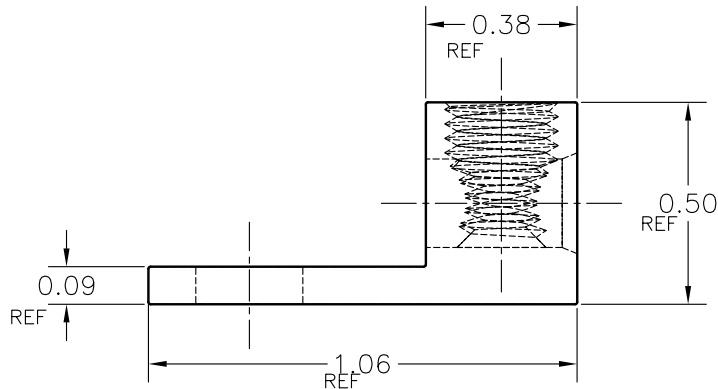
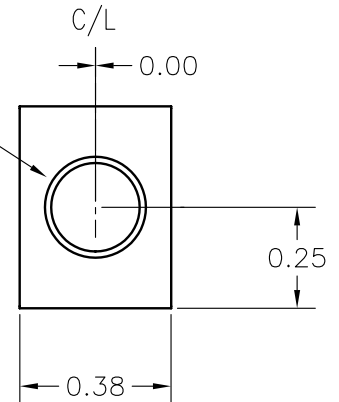


DRILL REF ϕ 0.213 X 0.340 REF. DEEP
CHAMFER REF .031 X 45°
TAP 1/4-28 X 0.312 REF. DEEP UNF-2B



DRILL ϕ .219 \pm .010 X THRU
CHAMFER REF .031 X 45°



NOTES:

MARKING:

IHI, S6, 6-14, CU9AL



THIS DRAWING AND DESIGN ARE THE PROPERTY
OF INTERNATIONAL HYDRAULICS INC.,
CLEVELAND, OHIO, AND MAY NOT BE
DUPLICATED, USED FOR BASIS OF DESIGN OR
MANUFACTURE WITHOUT THE WRITTEN
PERMISSION OF INTERNATIONAL HYDRAULICS
INC., CLEVELAND, OHIO.

UNLESS OTHERWISE SPECIFIED
1. DIMS ARE IN INCHES
2. TOLERANCE ON DIM'S
2 PLACE (.00) \pm .010
3 PLACE (.000) \pm .005
FRACTION \pm 1/32
ANGLES \pm 1/2°

MATERIAL
6061-T6

FINISH

TIN PLATE - EMS 131A

INTERNATIONAL HYDRAULICS, INC.

TITLE

SINGLE LUG - ALUMINUM
WIRE RANGE: 6 - 14

SIZE

A

DRAWN BY

JDB

CHECK

DWG NO

S6

REV

DATE 01.07.2000

THIS IS A CAD DRAWING, DO NOT MANUALLY REVISE